

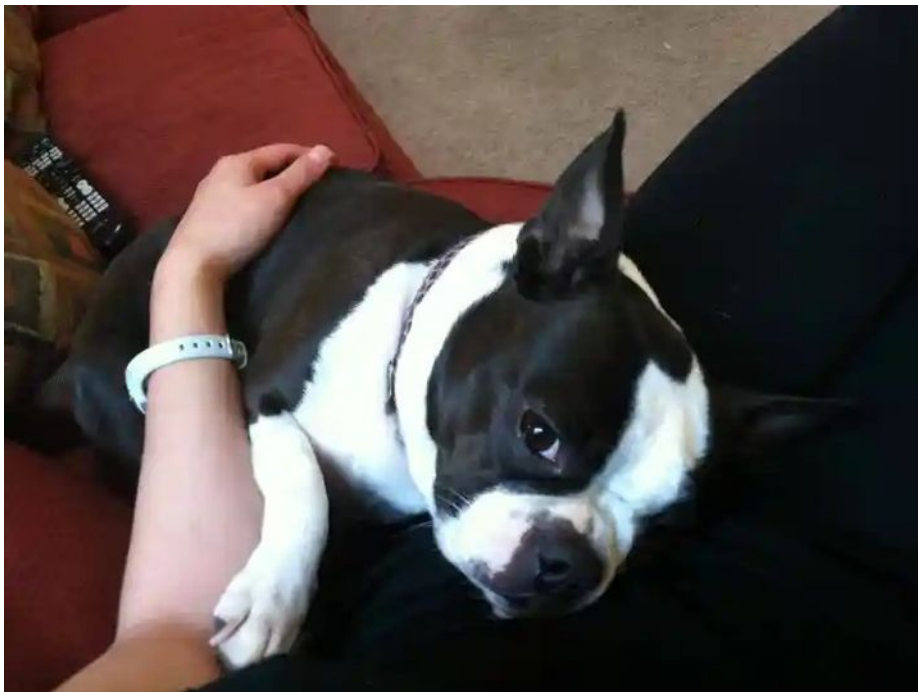


Weekly Message

Dear Friend,

Before I begin this week's message, I know you join me in sending prayers and support to all those suffering in the ongoing destruction wrought by Hurricane Ian. The images are devastating, and this is a time that we need to stand together as a nation as the massive work of recovery begins.

And now, closer to home. Lily, a 15-year-old Boston Terrier, visits TWR with her mom, Catherine, on a daily basis. Lily was born in Southern California, but has traveled farther than many humans! Lily has lived in San Francisco, Italy, and Dubai. Catherine defines Lily as "a real adventure pup!"



Catherine shared that, prior to meeting Lily, she had been looking at Boston Terrier rescues for about 10 years, but it was never the right time. When she found Lily, she knew she couldn't walk away and it was meant to be. The two have been inseparable ever since.

When Catherine fell into homelessness, Lily remained a constant companion. Catherine never found being unhoused with a pet to be challenging, rather she felt it was a great boon. Aside from being a "comfort wherever she is," Lily also provides a much-needed routine. Catherine says, "her unconditional love is unbelievable. She cheers other people up wherever she goes." Feeling even a moment of cheer is vital to our unhoused neighbors and, in that way, Lily is being of service to more than just Catherine. For Catherine, Lily has filled the role of "family and best friend."

At TWR, both Catherine and Lily get a respite from the elements. Mom is able to wash her clothes as well as Lily's blankets and little dog bed. Catherine also informed us that Lily enjoys small bites of TWR leftovers in the evening. Emotional support animals play a tremendous role in the healing and support of their owners.

I love stories like this from The Women's Room - they remind me that what we do at Friends In Deed is about meeting our clients and guests "where they are," providing love, support, compassion, and care. Wherever people are on their life's journey, we can be there to receive them and surround them with our amazing staff, volunteers, and community - providing a few hours of respite from the loneliness that so often accompanies those experiencing homelessness.

And you play such an important role in making this happen, through time and treasure, without which we couldn't open our doors each day. As we head into the final months of the year, we will need your support more than ever to ensure that we have the funds to provide the kind of care we are so proud to offer. If you haven't donated yet this year, or even if you have, please consider [making a gift](#) (right now is a great time!). That is the way we continue "doing together what we cannot do alone."

Blessings, and have a lovely weekend,
Rabbi Joshua



We can only operate with your help!

Donate today

Join the Legacy Society

Get Social



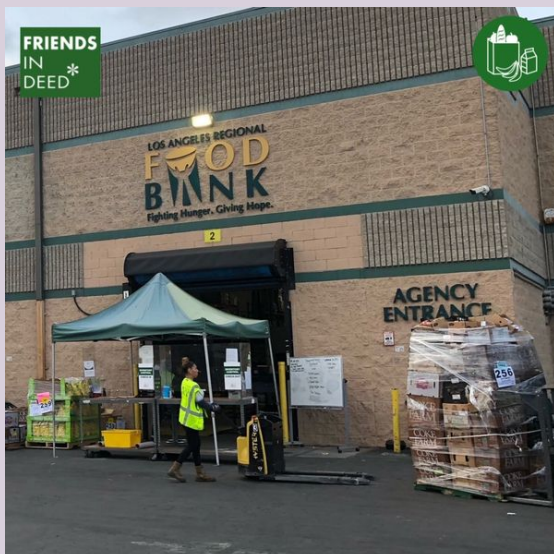
Westridge School's Service Fair

Director of The Women's Room, Marlene Martinez, represented Friends In Deed at Westridge School's service fair to share about volunteer opportunities and service projects. Let us know if you have a service fair in the local community you'd like us to attend! [Read More...](#)



USC Keck School of Medicine

Our Street Outreach and Housing team has been developing new relationships with other organizations to enhance the services provided to our clients. USC Keck School of Medicine team members came out to Friends In Deed last week for their first visit. We look forward to watching this partnership. [Read More...](#)



LA Food Bank

Some early Saturday mornings, we will make a trip to the LA Food Bank to see what is available for pick-up. The LA Food Bank being open on Saturdays is a HUGE help to so many agencies that serve LA County. Thank you Los Angeles Regional Food Bank for helping us feed our community. [Read More...](#)

New Street Outreach Vehicle



Thanks to the generosity of the Ahmanson Foundation (who also funded our Food Pantry van several years ago), Friends In Deed now has a dedicated Street Outreach hybrid vehicle!

News and Events

The Maya Salon

The Maya Salon is collecting items to assemble care packages for Friends In Deed clients. If you need a visit to the hair salon, and also want to do a little good, consider dropping off a few items. Thanks to The Maya Salon for the support!

CARE PACKAGES

A LIST OF WHAT YOU CAN SHARE WITH FRIENDS IN DEED:

- plastic utensil packs w/ napkins
- large ziplock bags
- water bottle
- socks
- snacks

IDEAS FOR SNACKS

<ul style="list-style-type: none"> chips cracker beef jerky raisins / craisins nuts trail mix fruit cups dried fruit cookies / pastries 	<ul style="list-style-type: none"> breakfast / protein bars vienna sausages tuna or chicken salad (individual packs) peanut butter (individual packs) campbell soups (pull top lid or the soups that can go directly into microwaves)
--	--



**FRIENDS
IN
DEED ***

@masks4angels

THE MAYA
EST. 2017

ACCEPTING DONATIONS FROM NOW UNTIL 11/13, SUNDAY, AND VOLUNTEERS ON 11/13 DAY TO PUT TOGETHER CARE PACKAGES AND DISTRIBUTE.



Friends In Deed is committed to fostering, cultivating, and preserving a culture of diversity, equity and inclusion. We embrace and celebrate the spectrum of our employees', volunteers', and clients' ages, color, ability or disability, ethnicity, family or marital status, gender identity or expression, language, national origin, physical and mental ability, political affiliation, race, religion, sexual orientation, socio-economic status, veteran status, neurodiversity, and other characteristics that make our employees, volunteers, and clients unique.

[Having trouble seeing this message? View as Webpage](#)

[Unsubscribe office@friendsindeedpas.org](#)

[Update Profile](#) | [Constant Contact Data Notice](#)

Sent by director@friendsindeedpas.org powered by



Try email marketing for free today!